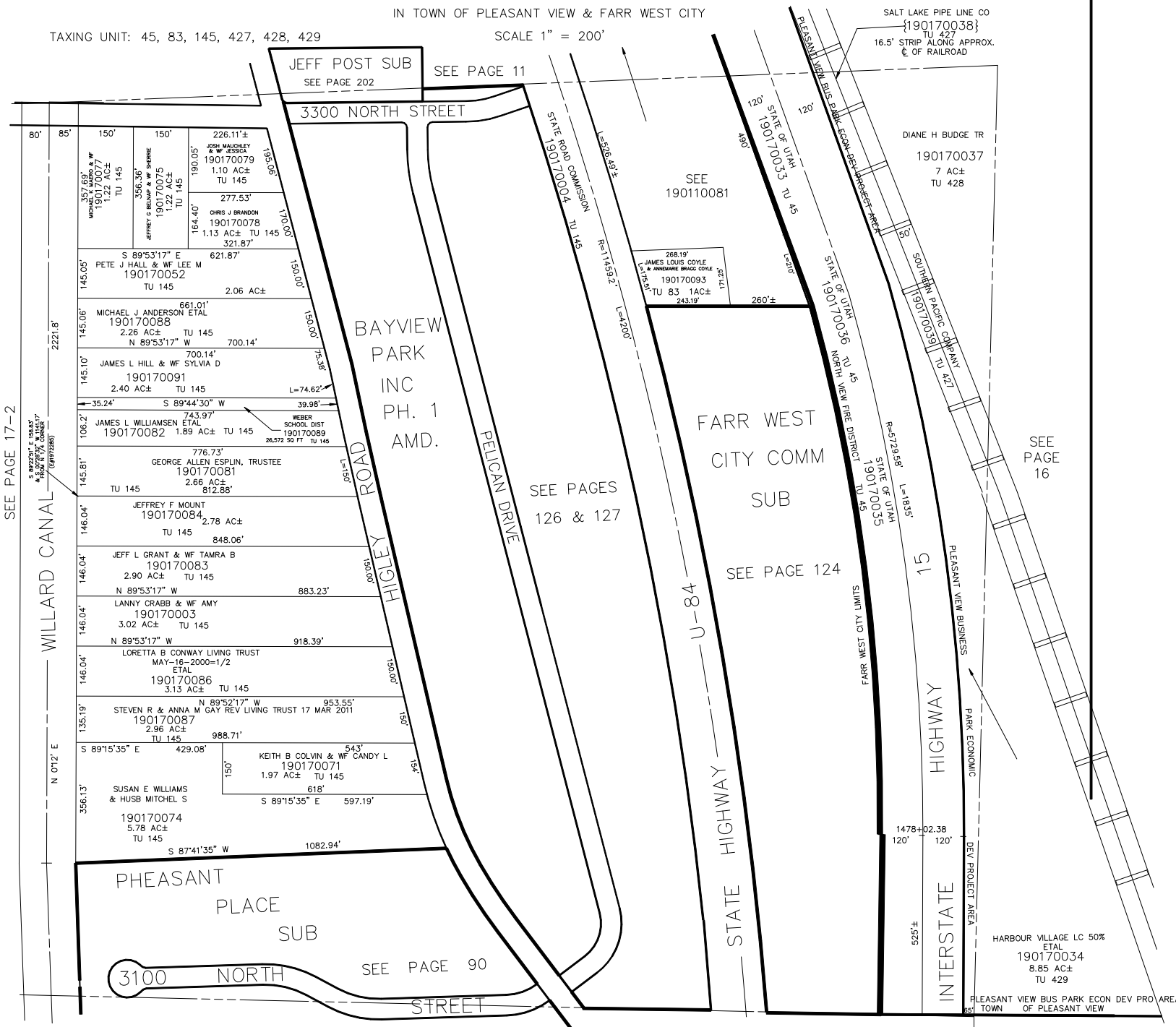


SECTION 26, T.7N., R.2W., S.L.B. & M.

IN TOWN OF PLEASANT VIEW & FARR WEST CITY

TAXING UNIT: 45, 83, 145, 427, 428, 429

SCALE 1" = 200'



SEE PAGE 17-2

WILLARD CANAL

N 01'2" E

80' 85' 150' 150' 190.05' 190.05' 164.40' 145.05' 145.06' 145.10' 106.2' 145.81' 146.04' 146.04' 146.04' 135.19' 356.13'

357.69' MICHAE L & W 190170077 1.22 AC± TU 145

356.36' JEFFREY C & BILLY J 190170075 1.22 AC± TU 145

226.11± JOSE MAURICELLY & W 4536 CA 190170079 1.10 AC± TU 145

277.53' CHRIS J BRANDON 190170078 1.13 AC± TU 145 321.87'

621.87' S 89°53'17" E PETE J HALL & WF LEE M 190170052 TU 145 2.06 AC±

661.01' MICHAEL J ANDERSON ETAL 190170088 2.26 AC± TU 145 N 89°53'17" W 700.14'

700.14' JAMES L HILL & WF SYLVIA D 190170091 2.40 AC± TU 145

743.97' JAMES L WILLIAMSEN ETAL 190170082 1.89 AC± TU 145

776.73' GEORGE ALLEN ESPLIN, TRUSTEE 190170081 2.66 AC± 812.88'

2.78 AC± JEFFREY F MOUNT 190170084 TU 145 848.06'

2.90 AC± JEFF L GRANT & WF TAMRA B 190170083 TU 145

3.02 AC± LANNY CRABB & WF AMY 190170003 TU 145

3.13 AC± LORETTA B CONWAY LIVING TRUST MAY-16-2000=1/2 ETAL 190170086 TU 145

2.96 AC± STEVEN R & ANNA M GAY REV LIVING TRUST 17 MAR 2011 190170087 TU 145

5.78 AC± SUSAN E WILLIAMS & HUSB MITCHEL S 190170074 TU 145

JEFF POST SUB SEE PAGE 202 SEE PAGE 11

3300 NORTH STREET

BAYVIEW PARK INC PH. 1 AMD.

HIGLEY ROAD

PELECAN DRIVE

PHEASANT PLACE SUB

3100 NORTH STREET SEE PAGE 90

SEE 190110081

268.19' JAMES LOUIS COYLE & ANNE MARIE BRUCE COYLE 190170093 TU 83 1AC± 243.19'

FARR WEST CITY COMM SUB

SEE PAGES 126 & 127

SEE PAGE 124

STATE HIGHWAY U-84

SALT LAKE PIPE LINE CO {190170038} TU 427 16.5' STRIP ALONG APPROX. E OF RAILROAD

DIANE H BUDGE TR 190170037 7 AC± TU 428

STATE OF UTAH 190170035 TU 45

INTERSTATE HIGHWAY 15

HARBOUR VILLAGE LC 50% ETAL 190170034 8.85 AC± TU 429

PLEASANT VIEW BUS PARK ECON DEV PRO AREA TOWN OF PLEASANT VIEW